



Cable Lugs & Compression Connectors



CONTENTS



OUR COMPANY	3
CABLE LUGS AND COMPRESSION CONNECTORS	4
PRODUCT CODE NOMENCLATURE	5-6
1. COPPER CABLE LUGS AND COMPRESSION CONNECTORS	
1.1. Long Barrel Cable Lugs - One Hole	7
1.2. Long Barrel Cable Lugs - Two Hole	8-9
1.3. Standard Barrel Cable Lugs - One Hole	10-11
1.4. Copper Compression Connectors	12
2. ALUMINIUM DUAL RATED HEAVY DUTY CABLE LUGS AND COMPRESSION CONNECTORS	
2.1. Long Barrel Heavy Duty Cable Lugs - One Hole	13
2.2. Long Barrel Heavy Duty Cable Lugs - Two Hole	14
2.3. Aluminium Heavy Duty Compression Connectors	15
3. ALUMINIUM DUAL RATED STANDARD RANGE CABLE LUGS AND COMPRESSION CONNECTORS	
3.1. Standard Barrel Cable Lugs - One Hole	16
3.2. Standard Barrel Cable Lugs - Two Hole	17
3.3. Aluminium Standard Compression Connectors	18



Our Company

Raychem RPG (P) Ltd., incorporated in 1989, is a 50:50 joint Venture between TE Connectivity, U.S.A. (formerly Tyco Electronics) and RPG Enterprises, India.

TE Connectivity is a US\$13 Billion global provider for solutions in Network, Transportation, Consumers and Industrial for over 50 years.

RPG Enterprises, an establishment of over 30 years, is one of India's fastest growing business groups with turnover of US\$ 3 Billion. The group has more than fifteen companies managing diverse business interests in the areas of Automotive Tyres, Infrastructure, IT and Specialty including Pharmaceuticals, Power Ancillaries & Plantations.



CABLE LUGS AND COMPRESSION CONNECTORS

Cable Lugs are used for connecting/terminating the cables/wires to electrical installations, other cables, surfaces, or mechanisms. Raychem RPG manufactures Cable Lugs and Compression Connectors, which provides a wide range of electrical terminations with innovation and reliability. These Cable Lugs and Compression Connectors are made of high strength, high conductivity electrolytic copper and aluminium alloy materials to provide optimum connectivity.

FEATURES OF CABLE LUGS AND COMPRESSION CONNECTORS

- Cable Lugs and Compression Connectors are safe and economical both in design and use
- All copper Cable Lugs and Compression Connectors are electro-tinned to inhibit corrosion and oxidation
- UL listed as per UL 486A and 486B
- The Cable Lugs are viable for crimping with international tools.
- Lugs and Compression connector can be crimped with any standard crimping tool
- The Cable Lugs have clear marking with UL, catalogue, AWG size, colour coding, die number for ease of section & use
- Internally chamfered barrel for easy cable insertion
- Temperature rating : Al9Cu : 90°C, Al7Cu : 75°C

Product Approval

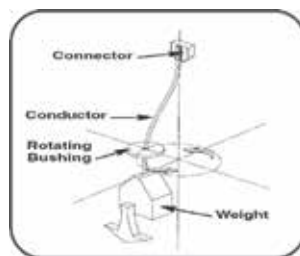
UL 486A & 486B Approval

Raychem RPG Terminal Lug and ferrules comply with UL Standards according to UL486A and UL486B.



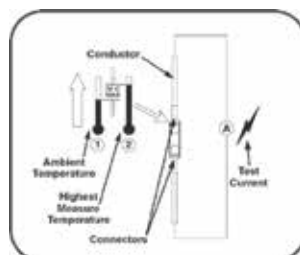
Test 1 - Wire Secureness Test

The object of this test is to get long term dependability in Raychem RPG copper lugs and ferrules with moving equipment.



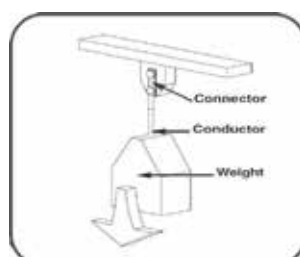
Test 2 - Static Heating Test

The object of this test is to get long Safe Connection at Rated Current Static Heating Test Sequence



Test 3 - Wire Pullout Test

The object of this test is to Secure connection under static tensile Loads. Wire Pullout Test sequence



IEC61238 Approval

Raychem RPG Compression connectors for power cables are rated for voltage up to 30kV(Um=36kV), e.g buried cables or cables installed in buildings, having conductors complying with IEC60228 and IEC60228A with cross-sectional area 10mm² and greater for copper and a maximum continuous conductor temperature not exceeding 90°C

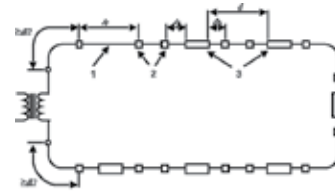


Figure 1a - Through connectors

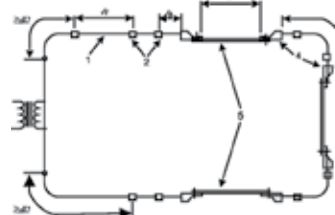


Figure 1b - Terminal lugs

where

$d \geq 80 \text{ A or } 500 \text{ mm}$, whichever is the greater

A is the corresponding conductor

cross-sectional area, in mm²

$$I r \geq I a + I b + I j$$

For stranded conductors:

$I a, I b \approx 15 \text{ A or } 150 \text{ mm}$, whichever is the greater

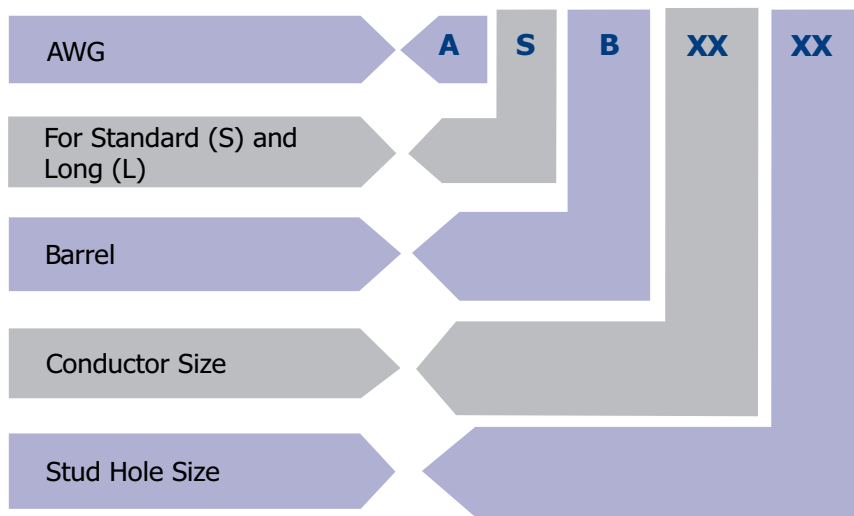
Key

1. reference conductor
2. equalizers (for stranded conductors)
3. through connectors
4. terminal lugs
5. linking bars

PRODUCT CODE NOMENCLATURE

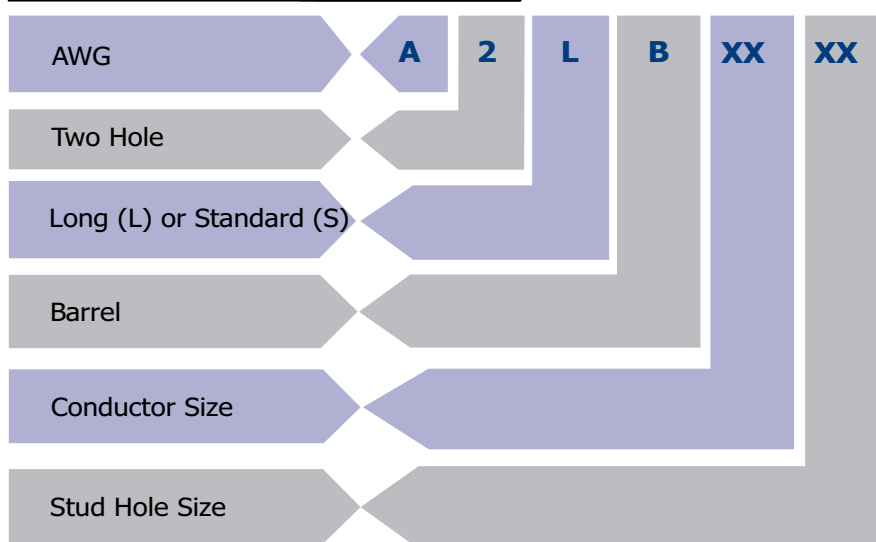
Copper Lugs - One Hole

Product Code: ASB XX - XX (e.g. ASB 1/0 - 1/2)



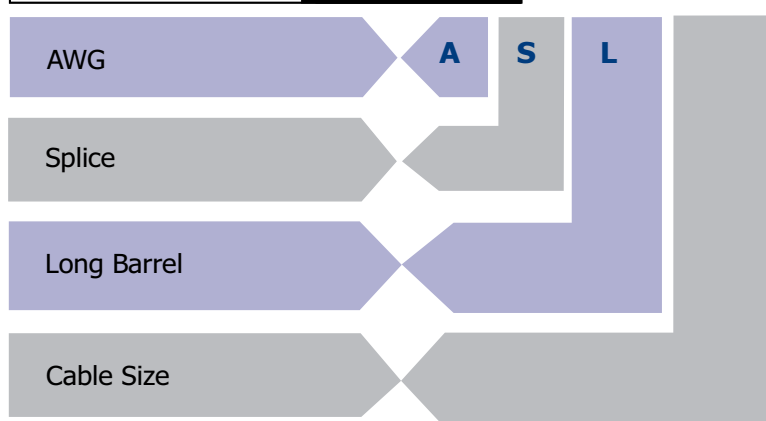
Copper Lugs - Two Hole

Product Code: ASLB XX - XX (e.g. ASLB 1/0 - 1/2)



Copper Compression Connector

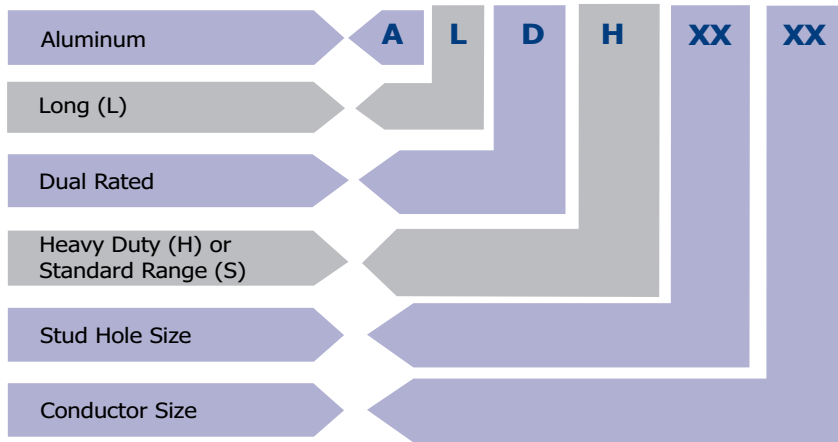
Product Code: ASL XX (e.g. ASL 8)



PRODUCT CODE NOMENCLATURE

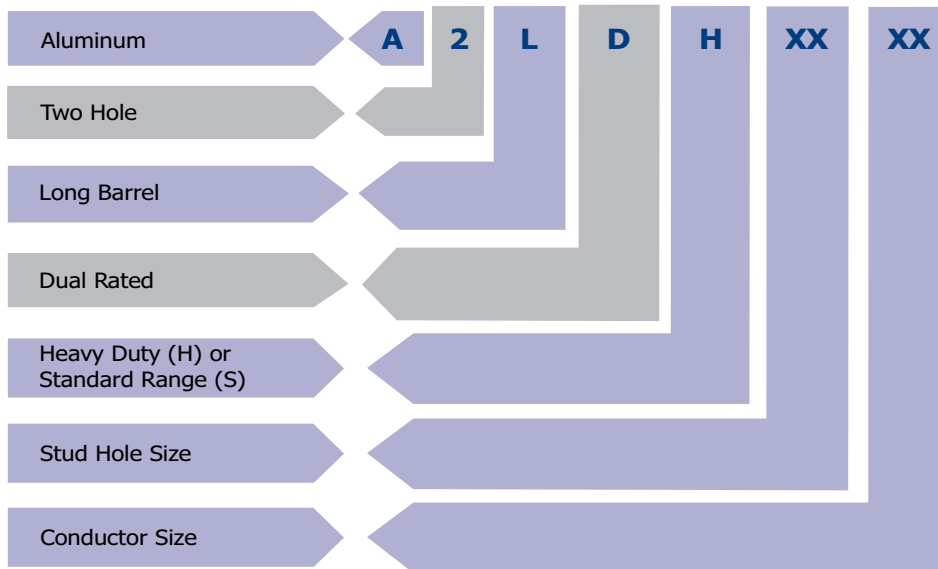
Aluminum Lugs - One Hole

Product Code: ALDH XX - XX (e.g. ALDH 1/0 - 1/2)



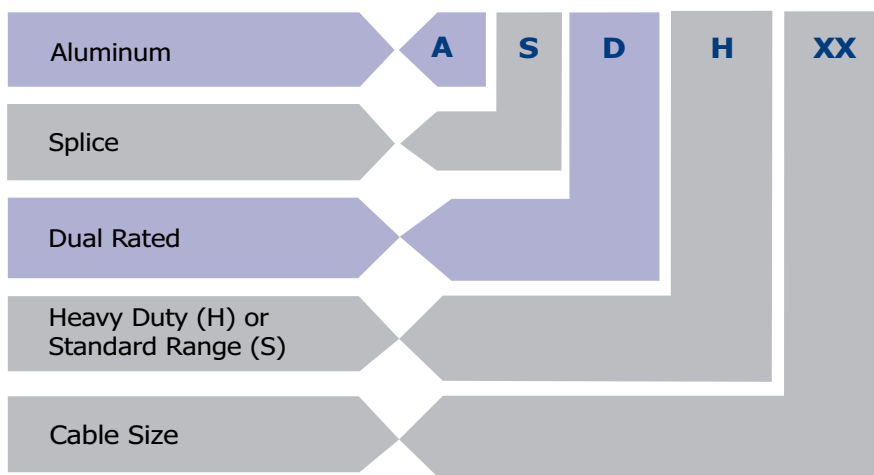
Aluminum Lugs - Two Hole

Product Code: A2LDH XX - XX (e.g. A2LDH 1/0 - 1/2)



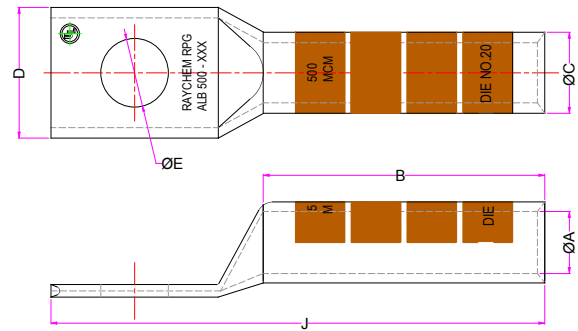
Aluminium Compression Connector

Product Code: ASDH XX (e.g. ASDH 6)



1. COPPER CABLE LUGS AND COMPRESSION CONNECTORS

1.1. Long Barrel Cable Lugs - One Hole

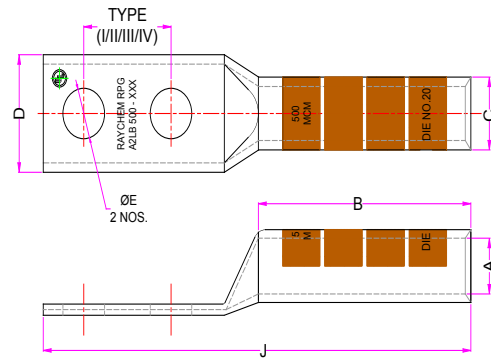


- * Long barrel permits multiple crimps for secured connection.
- * Chamfered barrel entry assures easy cable insertion.
- * Available with or without inspection hole.
- * Crimping with standard die sets.
- * Seamless, one piece copper construction with tin plating assures maximum conductivity and avoids oxidation of copper.
- * The copper conductivity of the lugs is => 97% IACS and purity = 99.9% min.

Raychem RPG Product Code	Cable Size	Dimensions (Inch)						Colour Code	Strip Length (Inch)	No.of Crimp
		Stud Hole	Internal Dia	Outer Dia	Barrel Length	Palm Width	Total Length			
		E	A	C	B	D	J			
ALB8 - # 10	8 AWG	# 10	0.17	0.27	0.81	0.38	1.69	Red	0.9	2
ALB8 - 1/4	8 AWG	1/4	0.17	0.27	0.81	0.41	1.69	Red	0.9	2
ALB6 - #10	6 AWG	#10	0.20	0.29	1.12	0.41	1.90	Blue	1.2	2
ALB6 - 1/4	6 AWG	1/4	0.20	0.29	1.12	0.41	1.90	Blue	1.2	2
ALB6 - 1/2	6 AWG	1/2	0.20	0.29	1.12	0.83	2.64	Blue	1.2	2
ALB4 - # 10	4 AWG	# 10	0.25	0.34	1.12	0.49	1.90	Gray	1.2	2
ALB4 - 1/4	4 AWG	1/4	0.25	0.34	1.12	0.50	1.90	Gray	1.2	2
ALB4 - 3/8	4 AWG	3/8	0.25	0.34	1.12	0.58	2.25	Gray	1.2	2
ALB4 - 1/2	4 AWG	1/2	0.25	0.34	1.12	0.83	2.69	Gray	1.2	2
ALB2 - # 10	2 AWG	# 10	0.31	0.42	1.25	0.61	2.10	Brown	1.4	2
ALB2 - 5/16	2 AWG	5/16	0.31	0.42	1.25	0.61	2.29	Brown	1.4	2
ALB2 - 1/2	2 AWG	1/2	0.31	0.42	1.25	0.83	2.88	Brown	1.4	2
ALB1 - 10	1 AWG	# 10	0.35	0.46	1.38	0.68	2.30	Green	1.5	2
ALB1 - 5/16	1 AWG	5/16	0.35	0.46	1.38	0.68	2.50	Green	1.5	2
ALB1 - 1/2	1 AWG	1/2	0.35	0.46	1.38	0.83	3.06	Green	1.5	2
ALB1/0 - # 10	1/0 AWG	# 10	0.39	0.52	1.38	0.75	2.30	Pink	1.5	2
ALB1/0 - 5/16	1/0 AWG	5/16	0.39	0.52	1.38	0.75	2.60	Pink	1.5	2
ALB1/0 - 3/8	1/0 AWG	3/8	0.39	0.52	1.38	0.75	2.60	Pink	1.5	2
ALB1/0 - 1/2	1/0 AWG	1/2	0.39	0.52	1.38	0.75	3.05	Pink	1.5	2
ALB2/0 - 3/8	2/0 AWG	3/8	0.45	0.56	1.50	0.82	2.77	Black	1.7	2
ALB2/0 - 1/2	2/0 AWG	1/2	0.45	0.56	1.50	0.82	3.21	Black	1.7	2
ALB3/0 - 3/8	3/0 AWG	3/8	0.49	0.62	1.50	0.91	3.06	Orange	1.7	2
ALB3/0 - 1/2	3/0 AWG	1/2	0.49	0.62	1.50	0.91	3.06	Orange	1.7	2
ALB4/0 - 3/8	4/0 AWG	3/8	0.56	0.69	1.62	1.00	2.98	Purple	1.8	2
ALB4/0 - 1/2	4/0 AWG	1/2	0.56	0.69	1.62	1.00	3.23	Purple	1.8	2
ALB250 - 1/2	250 MCM	1/2	0.59	0.75	1.62	1.09	3.26	Yellow	1.8	2
ALB300 - 5/16	300 MCM	5/16	0.65	0.82	2.00	1.20	3.69	White	2.2	4
ALB300 - 3/8	300 MCM	3/8	0.65	0.82	2.00	1.20	3.69	White	2.2	4
ALB300 - 1/2	300 MCM	1/2	0.65	0.82	2.00	1.20	3.69	White	2.2	4
ALB350 - 3/8	350 MCM	3/8	0.70	0.88	2.00	1.29	3.73	Red	2.2	4
ALB350 - 1/2	350 MCM	1/2	0.70	0.88	2.00	1.29	3.73	Red	2.2	4
ALB400 - 3/8	400 MCM	3/8	0.76	0.95	2.12	1.38	4.10	Blue	2.3	4
ALB400 - 1/2	400 MCM	1/2	0.76	0.95	2.12	1.38	4.10	Blue	2.3	4
ALB400 - 5/8	400 MCM	5/8	0.76	0.95	2.12	1.38	4.10	Blue	2.3	4
ALB500 - 1/2	500 MCM	1/2	0.83	1.06	2.25	1.54	4.40	Brown	2.5	4
ALB500 - 5/8	500 MCM	5/8	0.83	1.06	2.25	1.54	4.40	Brown	2.5	4
ALB600 - 1/2	600 MCM	1/2	0.92	1.19	2.69	1.71	4.83	Green	3.0	4
ALB600 - 5/8	600 MCM	5/8	0.92	1.19	2.69	1.71	4.80	Green	3.0	4
ALB750 - 1/2	750 MCM	1/2	1.03	1.30	2.88	1.89	5.11	Black	3.2	4
ALB750 - 5/8	750 MCM	5/8	1.03	1.30	2.88	1.89	5.10	Black	3.2	4
ALB1000 - 1/2	1000 MCM	1/2	1.17	1.50	3.00	2.19	5.40	white	3.3	4
ALB1000 - 5/8	1000 MCM	5/8	1.17	1.50	3.00	2.19	5.40	white	3.3	4

1. COPPER CABLE LUGS AND COMPRESSION CONNECTORS

1.2. Long Barrel Cable Lugs - Two Hole



- * Best suited in application where two bolts are needed to avoid rotation or movement of the lugs.
- * Long Barrel Permits extra crimps for additional assurance on heavy duty loads.
- * Lugs have chamfered mouth for easy cable insertion.
- * Available with or without inspection hole.
- * Used in industrial applications and substations where high mechanical strength is required.
- * Seamless, one piece copper construction with tin plating assures maximum conductivity and avoids oxidation of copper
- * The copper conductivity of the lugs is => 97% IACS and purity = 99.9% min.

Raychem RPG Product Code	Cable Size	Dimensions (Inch)								Colour Code	Strip Length (Inch)	No. of Crimp
		Stud Hole	Center Distance	Type	Internal Dia	Outer Dia	Barrel Length	Palm Width	Total Length			
					A	C	B	D	J			
A2LB 8-1/4 I	8 AWG	1/4	0.63	I	0.17	0.27	0.81	0.42	2.33	Red	0.89	1
A2LB 8-1/4 II	8 AWG	1/4	0.75	II	0.17	0.27	0.81	0.42	2.45	Red	0.89	1
A2LB 6-1/4 I	6 AWG	1/4	0.63	I	0.20	0.30	1.12	0.42	2.65	Blue	1.23	2
A2LB 6-1/4 III	6 AWG	1/4	1.00	III	0.20	0.30	1.12	0.42	3.03	Blue	1.23	2
A2LB 6-1/2 IV	6 AWG	1/2	1.75	IV	0.20	0.30	1.12	0.81	4.40	Blue	1.23	2
A2LB 6-3/8 III	6 AWG	3/8	1.00	III	0.20	0.30	1.12	0.57	3.22	Blue	1.23	2
A2LB 6-3/8 II	6 AWG	3/8	0.75	II	0.20	0.30	1.12	0.57	2.97	Blue	1.23	2
A2LB 4-1/4 I	4 AWG	1/4	0.63	I	0.25	0.34	1.12	0.50	2.70	Gray	1.23	2
A2LB 4-1/4 II	4 AWG	1/4	0.75	II	0.25	0.34	1.12	0.50	2.83	Gray	1.23	2
A2LB 4-3/8 III	4 AWG	3/8	1.00	III	0.25	0.34	1.12	0.56	3.26	Gray	1.23	2
A2LB 4-1/2 IV	4 AWG	1/2	1.75	IV	0.25	0.34	1.12	0.81	4.45	Gray	1.23	2
A2LB 2-1/4 I	2 AWG	1/4	0.63	I	0.31	0.42	1.25	0.61	2.86	Brown	1.38	2
A2LB 2-1/4 II	2 AWG	1/4	0.75	II	0.31	0.42	1.25	0.61	2.98	Brown	1.38	2
A2LB 2-5/16 II	2 AWG	5/16	0.75	II	0.31	0.42	1.25	0.61	3.05	Brown	1.38	2
A2LB 2-3/8 IV	2 AWG	3/8	1.75	IV	0.31	0.42	1.25	0.61	4.17	Brown	1.38	2
A2LB 2-3/8 III	2 AWG	3/8	1.00	III	0.31	0.42	1.25	0.61	3.42	Brown	1.38	2
A2LB 2-1/2 IV	2 AWG	1/2	1.75	IV	0.31	0.42	1.25	0.61	3.42	Brown	1.38	2
A2LB 1-1/4 I	1 AWG	1/4	0.63	I	0.35	0.46	1.38	0.68	3.03	Green	1.52	2
A2LB 1-1/4 II	1 AWG	1/4	0.75	II	0.35	0.46	1.38	0.68	3.15	Green	1.52	2
A2LB 1-5/16 II	1 AWG	5/16	0.75	II	0.35	0.46	1.38	0.68	3.15	Green	1.52	2
A2LB 1-3/8 III	1 AWG	3/8	1.00	III	0.35	0.46	1.38	0.68	3.59	Green	1.52	2
A2LB 1-1/2 IV	1 AWG	1/2	1.75	IV	0.35	0.46	1.38	0.75	4.82	Green	1.52	2
A2LB 1/0-1/4 I	1/0 AWG	1/4	0.63	I	0.39	0.52	1.38	0.75	3.05	Pink	1.52	2
A2LB 1/0-1/4 II	1/0 AWG	1/4	0.75	II	0.39	0.52	1.38	0.75	3.18	Pink	1.52	2
A2LB 1/0-5/16 III	1/0 AWG	5/16	1.00	III	0.39	0.52	1.38	0.75	3.49	Pink	1.52	2
A2LB 1/0-3/8 III	1/0 AWG	3/8	1.00	III	0.39	0.52	1.38	0.75	3.62	Pink	1.52	2
A2LB 1/0-3/8 IV	1/0 AWG	3/8	1.75	IV	0.39	0.52	1.38	0.75	4.37	Pink	1.52	2
A2LB 1/0-1/2 IV	1/0 AWG	1/2	1.75	IV	0.39	0.52	1.38	0.81	4.81	Pink	1.52	2
A2LB 2/0-1/4 I	2/0 AWG	1/4	0.63	I	0.45	0.56	1.50	0.82	3.22	Black	1.65	2
A2LB 2/0-1/4 II	2/0 AWG	1/4	0.75	II	0.45	0.56	1.50	0.82	3.34	Black	1.65	2
A2LB 2/0-3/8 III	2/0 AWG	3/8	1.00	III	0.45	0.56	1.50	0.82	3.78	Black	1.65	2
A2LB 2/0-1/2 IV	2/0 AWG	1/2	1.75	IV	0.45	0.56	1.50	0.82	4.97	Black	1.65	2
A2LB 3/0-1/4 II	3/0 AWG	1/4	0.75	II	0.49	0.62	1.50	0.91	3.38	Orange	1.65	2
A2LB 3/0-3/8 III	3/0 AWG	3/8	1.00	III	0.49	0.62	1.50	0.91	3.82	Orange	1.65	2
A2LB 3/0-1/2 IV	3/0 AWG	1/2	1.75	IV	0.49	0.62	1.50	0.91	5.01	Orange	1.65	2
A2LB 4/0-1/4 II	4/0 AWG	1/4	0.75	II	0.56	0.69	1.62	1.00	3.55	Purple	1.78	2
A2LB 4/0-3/8 IV	4/0 AWG	3/8	1.75	IV	0.56	0.69	1.62	1.00	4.74	Purple	1.78	2
A2LB 4/0-3/8 III	4/0 AWG	3/8	1.00	III	0.56	0.69	1.62	1.00	3.99	Purple	1.78	2
A2LB 4/0-1/2 IV	4/0 AWG	1/2	1.75	IV	0.56	0.69	1.62	1.00	5.17	Purple	1.78	2
A2LB 250-3/8 III	250 MCM	3/8	1.00	III	0.59	0.75	1.62	1.09	4.02	Yellow	1.78	2

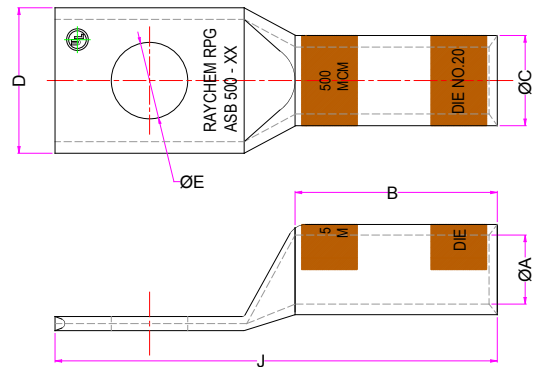
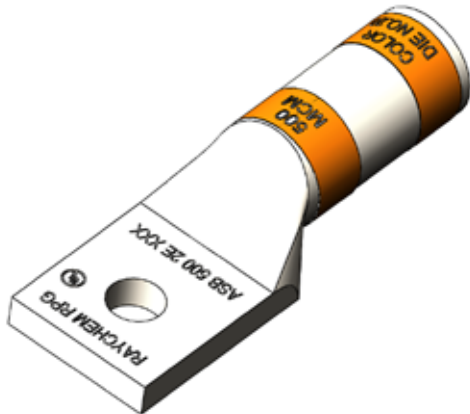
Continued...

1.2. Long Barrel Cable Lugs - Two Hole Continued

Raychem RPG Product Code	Cable Size	Dimensions (Inch)								Colour Code	Strip Length (Inch)	No. of Crimp
		Stud Hole	Center Distance	Type	Internal Dia	Outer Dia	Barrel Length	Palm Width	Total Length			
					A	C	B	D	J			
E												
A2LB 250-1/2 IV	250 MCM	1/2	1.75	IV	0.59	0.75	1.62	1.09	5.21	Yellow	1.78	2
A2LB 300-3/8 III	300 MCM	3/8	1.00	III	0.65	0.82	2.00	1.20	4.45	White	2.20	4
A2LB 300-1/2 IV	300 MCM	1/2	1.75	IV	0.65	0.82	2.00	1.20	5.64	White	2.20	4
A2LB 350-1/4 II	350 MCM	1/4	0.75	II	0.70	0.88	2.00	1.29	4.05	Red	2.20	4
A2LB 350-3/8 III	350 MCM	3/8	1.00	III	0.70	0.88	2.00	1.29	4.49	Red	2.20	4
A2LB 350-1/2 IV	350 MCM	1/2	1.75	IV	0.70	0.88	2.00	1.29	5.68	Red	2.20	4
A2LB 400-3/8 III	400 MCM	3/8	1.00	III	0.76	0.95	2.12	1.38	4.66	Blue	2.33	4
A2LB 400-1/2 IV	400 MCM	1/2	1.75	IV	0.76	0.95	2.12	1.38	5.85	Blue	2.33	4
A2LB 500-1/4 II	500 MCM	1/4	0.75	II	0.83	1.06	2.25	1.54	4.46	Brown	2.48	4
A2LB 500-3/8 III	500 MCM	3/8	1.00	III	0.83	1.06	2.25	1.54	4.90	Brown	2.48	4
A2LB 500-1/2 IV	500 MCM	1/2	1.75	IV	0.83	1.06	2.25	1.54	6.06	Brown	2.48	4
A2LB 600-3/8 III	600 MCM	3/8	1.00	III	0.92	1.19	2.69	1.71	5.59	Green	2.96	4
A2LB 600-1/2 IV	600 MCM	1/2	1.75	IV	0.92	1.19	2.69	1.71	6.59	Green	2.96	4
A2LB 750-1/2 IV	750 MCM	1/2	1.75	IV	1.03	1.30	2.88	1.89	6.87	Black	3.17	4
A2LB 750-3/8 III	750 MCM	3/8	1.00	III	1.03	1.30	2.88	1.89	5.87	Black	3.17	4
A2LB 1000-1/2 IV	1000 MCM	1/2	1.75	IV	1.17	1.50	3.00	2.19	7.14	White	3.30	4
A2LB 1000-3/8 III	1000 MCM	3/8	1.00	III	1.17	1.50	3.00	2.19	6.14	White	3.30	4

1. COPPER CABLE LUGS AND COMPRESSION CONNECTORS

1.3. Standard Barrel Cable Lugs - One Hole



- * Used in regular electrical applications.
- * Comes with flat contact surface and precise stud hole.
- * Lugs have chamfered mouth for easy cable insertion.
- * Available with or without inspection hole.

- * Seamless, one piece copper construction with tin plating assures maximum conductivity and avoids oxidation of copper.
- * The copper conductivity of the lugs is => 97% IACS and purity = 99.9% min.

Raychem RPG Product Code	Cable Size	Dimensions (Inch)						Colour Code	Strip Length (Inch)	No. of Crimp
		Stud Hole	Internal Dia	Outer Dia	Barrel Length	Palm Width	Total Length			
		E	A	C	B	D	J			
ASB 10- 1/4	10 AWG	1/4	0.1	0.2	0.4	0.4	1.1	-	0.44	1
ASB 8- 5/16	8 AWG	5/16	0.2	0.27	0.4	0.5	1.4	Red	0.48	1
ASB 8- 1/4	8 AWG	1/4	0.2	0.27	0.4	0.4	1.3	Red	0.48	1
ASB 8- 3/8	8 AWG	3/8	0.2	0.27	0.4	0.6	1.5	Red	0.48	1
ASB 6- 8-10	6 AWG	8-10	0.2	0.29	0.5	0.4	1.0	Blue	0.63	1
ASB 6- 1/4	6 AWG	1/4	0.2	0.29	0.5	0.5	1.2	Blue	0.63	1
ASB 6- 5/16	6 AWG	5/16	0.2	0.29	0.5	0.5	1.3	Blue	0.63	1
ASB 6- 3/8	6 AWG	3/8	0.2	0.29	0.5	0.6	1.3	Blue	0.63	1
ASB 4- 8-10	4 AWG	8-10	0.2	0.34	0.8	0.5	1.6	Gray	0.88	1
ASB 4- 1/4	4 AWG	1/4	0.2	0.34	0.8	0.5	1.7	Gray	0.88	1
ASB 4- 5/16	4 AWG	5/16	0.2	0.34	0.8	0.6	1.9	Gray	0.88	1
ASB 4- 3/8	4 AWG	3/8	0.2	0.34	0.8	0.6	1.9	Gray	0.88	1
ASB 4- 1/2	4 AWG	1/2	0.2	0.34	0.8	0.7	2.2	Gray	0.88	1
ASB 2- 1/4	2 AWG	1/4	0.3	0.42	0.9	0.6	1.9	Brown	0.94	1
ASB 2- 5/16	2 AWG	5/16	0.3	0.42	0.9	0.6	1.9	Brown	0.94	1
ASB 2- 3/8	2 AWG	3/8	0.3	0.42	0.9	0.6	2.1	Brown	0.94	1
ASB 2- 1/2	2 AWG	1/2	0.3	0.42	0.9	0.7	2.3	Brown	0.94	1
ASB 1- 1/4	1 AWG	1/4	0.4	0.46	0.9	0.7	1.9	Green	0.94	1
ASB 1- 5/16	1 AWG	5/16	0.4	0.46	0.9	0.7	1.9	Green	0.94	1
ASB 1- 3/8	1 AWG	3/8	0.4	0.46	0.9	0.7	2.1	Green	0.94	1
ASB 1- 1/2	1 AWG	1/2	0.4	0.46	0.9	0.7	2.4	Green	0.94	1
ASB 1/0- 1/4	1/0 AWG	1/4	0.4	0.52	0.9	0.8	2.0	Pink	0.94	1
ASB 1/0- 5/16	1/0 AWG	5/16	0.4	0.52	0.9	0.8	2.0	Pink	0.94	1
ASB 1/0- 3/8	1/0 AWG	3/8	0.4	0.52	0.9	0.8	2.1	Pink	0.94	1
ASB 1/0- 1/2	1/0 AWG	1/2	0.4	0.52	0.9	0.8	2.3	Pink	0.94	1
ASB 2/0- 1/4	2/0 AWG	1/4	0.4	0.56	0.9	0.8	1.9	Black	1.00	1
ASB 2/0- 5/16	2/0 AWG	5/16	0.4	0.56	0.9	0.6	2.6	Black	1.00	1
ASB 2/0- 3/8	2/0 AWG	3/8	0.4	0.56	0.9	0.8	2.2	Black	1.00	1
ASB 2/0- 1/2	2/0 AWG	1/2	0.4	0.56	0.9	0.8	2.4	Black	1.00	1
ASB 2/0- 3/4	2/0 AWG	3/4	0.4	0.56	0.9	1.0	3.0	Black	1.00	1
ASB 3/0- 5/16	3/0 AWG	5/16	0.5	0.62	1.0	0.9	2.2	Orange	1.06	1
ASB 3/0- 3/8	3/0 AWG	3/8	0.5	0.62	1.0	0.9	2.3	Orange	1.06	1
ASB 3/0- 1/2	3/0 AWG	1/2	0.5	0.62	1.0	0.9	2.5	Orange	1.06	1
ASB 4/0- 1/4	4/0 AWG	1/4	0.6	0.69	0.9	1.0	2.0	Purple	1.13	1
ASB 4/0- 5/16	4/0 AWG	5/16	0.6	0.69	0.9	1.0	2.2	Purple	1.13	1
ASB 4/0- 3/8	4/0 AWG	3/8	0.6	0.69	0.9	1.0	2.2	Purple	1.13	1
ASB 4/0- 1/2	4/0 AWG	1/2	0.6	0.69	0.9	1.0	2.5	Purple	1.13	1

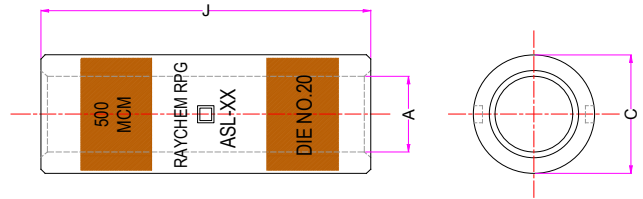
Continued...

1.3. Standard Barrel Cable Lugs - One Hole Continued

Raychem RPG Product Code	Cable Size	Dimensions (Inch)						Colour Code	Strip Length (Inch)	No.of Crimp
		Stud Hole	Internal Dia	Outer Dia	Barrel Length	Palm Width	Total Length			
		E	A	C	B	D	J			
ASB 4/0- 3/4	4/0 AWG	3/4	0.6	0.69	0.9	1.1	2.2	Purple	1.13	1
ASB 250- 1/4	250 MCM	1/4	0.6	0.75	1.1	1.1	2.2	Yellow	1.13	1
ASB 250- 5/16	250 MCM	5/16	0.6	0.75	1.1	1.1	2.2	Yellow	1.13	1
ASB 250- 3/8	250 MCM	3/8	0.6	0.75	1.1	1.1	2.4	Yellow	1.13	1
ASB 250- 1/2	250 MCM	1/2	0.6	0.75	1.1	1.1	2.7	Yellow	1.13	1
ASB 300- 5/16	300 MCM	5/16	0.65	0.82	1.0	1.2	2.3	White	1.13	2
ASB 300- 3/8	300 MCM	3/8	0.65	0.82	1.0	1.2	2.3	White	1.13	2
ASB 300- 1/2	300 MCM	1/2	0.65	0.82	1.0	1.2	2.7	White	1.13	2
ASB 300- 5/8	300 MCM	5/8	0.65	0.82	1.0	1.2	2.9	White	1.13	2
ASB 300- 7/8	300 MCM	7/8	0.65	0.82	1.0	1.2	3.4	White	1.13	2
ASB 350- 3/8	350 MCM	3/8	0.70	0.88	1.1	1.3	2.5	Red	1.17	2
ASB 350- 1/2	350 MCM	1/2	0.70	0.88	1.3	1.3	2.8	Red	1.42	2
ASB 350- 5/8	350 MCM	5/8	0.70	0.88	1.3	1.3	3.0	Red	1.42	2
ASB 350- 7/8	350 MCM	7/8	0.70	0.88	1.3	1.3	4.0	Red	1.42	2
ASB 400- 3/8	400 MCM	3/8	0.76	0.95	1.2	1.4	2.7	Blue	1.31	2
ASB 400- 1/2	400 MCM	1/2	0.76	0.95	1.2	1.4	2.9	Blue	1.31	2
ASB 400- 5/8	400 MCM	5/8	0.76	0.95	1.2	1.4	3.2	Blue	1.31	2
ASB 400- 7/8	400 MCM	7/8	0.76	0.95	1.2	1.4	3.6	Blue	1.31	2
ASB 500- 3/8	500 MCM	3/8	0.83	1.06	1.3	1.5	2.9	Brown	1.44	2
ASB 500- 1/2	500 MCM	1/2	0.83	1.06	1.3	1.5	3.1	Brown	1.44	2
ASB 500- 5/8	500 MCM	5/8	0.83	1.06	1.3	1.5	3.4	Brown	1.44	2
ASB 500- 3/4	500 MCM	3/4	0.83	1.06	1.3	1.5	3.6	Brown	1.44	2
ASB 500- 7/8	500 MCM	7/8	0.83	1.06	1.3	1.5	3.8	Brown	1.44	2
ASB 600- 1/2	600 MCM	1/2	0.92	1.19	1.4	1.7	3.3	Green	1.75	2
ASB 600- 5/8	600 MCM	5/8	0.92	1.19	1.4	1.7	3.7	Green	1.75	2
ASB 750- 1/2	750 MCM	1/2	1.03	1.30	1.4	1.9	3.4	Black	1.94	2
ASB 750- 5/8	750 MCM	5/8	1.03	1.30	1.4	1.9	3.7	Black	1.94	2
ASB 750- 7/8	750 MCM	7/8	1.03	1.30	1.4	1.9	4.1	Black	1.94	2
ASB 1000- 1/2	1000 MCM	1/2	1.17	1.50	1.65	2.2	4.0	White	1.94	3
ASB 1000- 5/8	1000 MCM	5/8	1.17	1.50	1.65	2.2	4.0	White	1.94	3
ASB 1000- 1	1000 MCM	1.0	1.17	1.50	1.65	2.2	4.7	White	1.94	3

1. COPPER CABLE LUGS AND COMPRESSION CONNECTORS

1.4. Copper Compression Connectors



* Provided with internal wire stops to prevent over insertion of conductor.

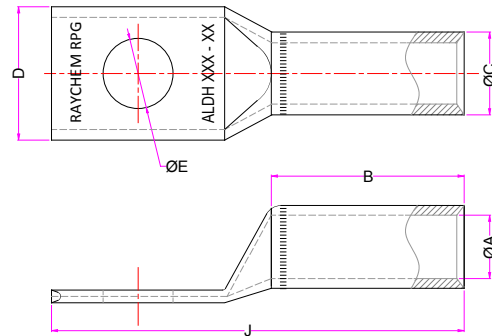
* These Compression connectors can be used for limited space application.

* Seamless, one piece electrolytic copper construction with tin plating assures maximum conductivity and avoids oxidation of copper.

Raychem RPG Product Code	Cable Size	Dimensions (Inch)	
		A (ID)	J (Total Length)
ASL 8	8 AWG	0.17	1.00
ASL 6	6 AWG	0.20	1.75
ASL 4	4 AWG	0.25	1.75
ASL 2	2 AWG	0.31	2.00
ASL 1	1 AWG	0.35	2.06
ASL 1/0	10 AWG	0.39	2.08
ASL 2/0	20 AWG	0.45	2.17
ASL 3/0	3/0 AWG	0.49	2.30
ASL 4/0	4/0 AWG	0.56	2.32
ASL 250	250 MCM	0.59	2.46
ASL 300	300 MCM	0.65	2.47
ASL 350	350 MCM	0.70	2.60
ASL 400	400 MCM	0.76	2.74
ASL 500	500 MCM	0.83	3.15
ASL 600	600 MCM	0.92	3.22
ASL 750	750 MCM	1.03	3.72
ASL 1000	1000 MCM	1.17	

2. ALUMINIUM DUAL RATED HEAVY DUTY CABLE LUGS AND COMPRESSION CONNECTORS

2.1. Long Barrel Heavy Duty Cable Lugs - One Hole



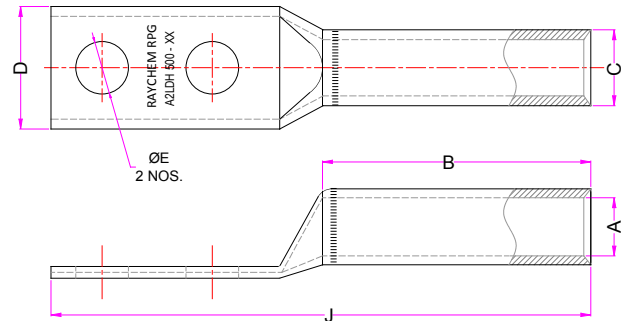
- * Made of high conductivity Aluminium with heavy duty wall thickness.
- * Provides maximum conductivity, low resistance and ductility for an excellent combination of electrical and crimp forming properties.
- * Covers a wide range of Aluminum or Copper conductors
- * Lugs are tin plated to resist electrolytic corrosion
- * Compactible With leading Crimping tools.

- * Chamfered ends ensure simplicity and ease of conductor insertion.
- * Color-coded end caps inserted in barrel end prevents foreign materials from entering and contaminating the connector before crimping.
- * Designed for heavy duty applications upto 35kV applications
- * (AL9CU) 90 °C.
- * Prefilled with oxide inhibiting compound.

Raychem RPG Product Code	Cable Size	E (Stud Hole)	Dimension (Inch)			
			A (ID)	D (Palm Width)	B (Barrel Length)	J (Total Length)
ALDH 1/0 -1/2"	1/0 AWG	1/2	0.42	0.88	1.31	3.13
ALDH 2 -1/2"	2 AWG	1/2	0.34	0.88	1.31	3.13
ALDH 6 -1/2"	6 AWG	1/2	0.22	0.88	1.31	3.13
ALDH 4 /0-1/2"	4/0 AWG	1/2	0.59	1.25	1.59	3.33
ALDH 1 2-1/2"	12 MCM	1/2	0.11	0.88	0.72	2.56
ALDH 10-1/2"	10 MCM	1/2	0.15	0.88	0.72	2.56
ALDH 8-1/2"	8 MCM	1/2	0.17	0.88	1.31	3.13
ALDH 4-1/2"	4 MCM	1/2	0.27	0.88	1.31	3.13
ALDH 3-1/2"	3 MCM	1/2	0.3	0.88	1.31	3.13
ALDH 386-1/2"	386 MCM	1/2	0.39	0.88	1.31	3.13
ALDH 2 /0-1/2"	2/0 MCM	1/2	0.48	1.16	1.39	3.33
ALDH 3 /0-1/2"	3/0 MCM	1/2	0.54	1.16	1.39	3.33
ALDH 300-1/2"	300 MCM	1/2	0.65	1.25	1.59	3.62
ALDH 350-1/2"	350 MCM	1/2	0.72	1.25	1.59	3.62
ALDH 400-1/2"	400 MCM	1/2	0.76	1.25	1.59	3.62

2. ALUMINIUM DUAL RATED HEAVY DUTY CABLE LUGS AND COMPRESSION CONNECTORS

2.2. Long Barrel Heavy Duty Cable Lugs - Two Holes

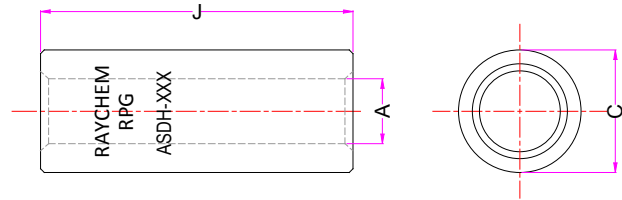


- * Raychem RPG aluminum compression two hole lugs are made of high conductivity aluminium with heavy duty wall thickness.
- * Provides maximum conductivity, low resistance and ductility for an excellent combination of electrical and crimp forming properties.
- * Covers a wide range of Aluminum or Copper conductors.
- * Lugs are tin plated to resist electrolytic corrosion.
- * Compatible With leading crimping tools.
- * Chamfered ends ensure simplicity and ease of conductor insertion.
- * Color-coded end caps inserted in barrel end prevents foreign materials from entering and contaminating the connector before crimping.
- * Designed for heavy duty applications upto 35kV applications.
- * (AL9CU) 90°C.
- * Prefilled with oxide inhibiting compound.

Raychem RPG Product Code	Cable Size	E (Stud Hole)	Dimension (Inch)			
			A (ID)	D (Palm Width)	B (Barrel Length)	J (Total Length)
A2LDH 1/0 -1/2"	1/0 AWG	1/2	0.42	0.88	1.31	3.13
A2LDH 2 -1/2"	2 AWG	1/2	0.34	0.88	1.31	3.13
A2LDH 6 -1/2"	6 AWG	1/2	0.22	0.88	1.31	3.13
A2LDH 4 /0-1/2"	4/0 AWG	1/2	0.59	1.25	1.59	3.33
A2LDH 1 2-1/2"	12 MCM	1/2	0.11	0.88	0.72	2.56
A2LDH 10-1/2"	10 MCM	1/2	0.15	0.88	0.72	2.56
A2LDH 8-1/2"	8 MCM	1/2	0.17	0.88	1.31	3.13
A2LDH 4-1/2"	4 MCM	1/2	0.27	0.88	1.31	3.13
A2LDH 3-1/2"	3 MCM	1/2	0.30	0.88	1.31	3.13
A2LDH 386-1/2"	386 MCM	1/2	0.39	0.88	1.31	3.13
A2LDH 2 /0-1/2"	2/0 MCM	1/2	0.48	1.16	1.39	3.33
A2LDH 3 /0-1/2"	3/0 MCM	1/2	0.54	1.16	1.39	3.33
A2LDH 300-1/2"	300 MCM	1/2	0.65	1.25	1.59	3.62
A2LDH 350-1/2"	350 MCM	1/2	0.72	1.25	1.59	3.62
A2LDH 400-1/2"	400 MCM	1/2	0.76	1.25	1.59	3.62

2. ALUMINIUM DUAL RATED HEAVY DUTY CABLE LUGS AND COMPRESSION CONNECTORS

2.3. Aluminium Heavy Duty Compression Connectors

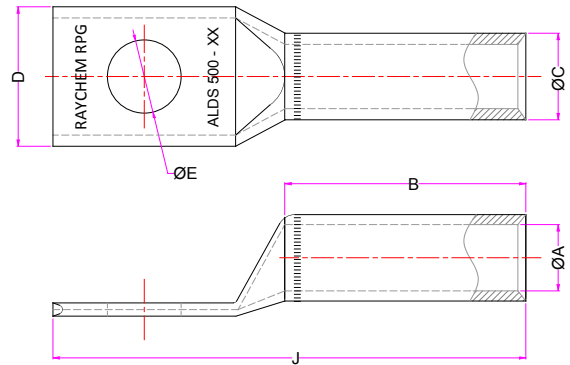


- * Raychem RPG Aluminum Compression connectors are made of high conductivity aluminium with heavy duty wall thickness.
- * Provides maximum conductivity, low resistance and ductility for an excellent combination of electrical and crimp forming properties.
- * Covers a wide range of Aluminum or Copper conductors.
- * Lugs are tin plated to resist electrolytic corrosion.
- * Compactible with leading crimping tools.
- * Chamfered ends ensure simplicity and ease of conductor insertion.
- * Color-coded end caps inserted in barrel end prevents foreign materials from entering and contaminating the connector before crimping.
- * Designed for heavy duty applications upto 35kV applications
- * (AL9CU) 90 °C.
- * Prefilled with oxide inhibiting compound.

Raychem RPG Product Code	Cable Size	Dimensions (Inch)	
		A (Internal Dia)	J (Total Length)
ASDH 1/0	1/0 AWG	0.42	2.25
ASDH 2	2 AWG	0.34	2.00
ASDH 6	6 AWG	0.22	1.63
ASDH 4 /0	4 /0 AWG	0.59	2.75
ASDH 4	4 MCM	0.27	2.00
ASDH 2 /0	2 /0 MCM	0.48	2.31
ASDH 3 /0	3 /0 MCM	0.54	2.71
ASDH 300	300 MCM	0.65	3.13
ASDH 350	350 MCM	0.72	3.38
ASDH 400	400 MCM	0.76	3.75
ASDH 500	500 MCM	0.93	3.88
ASDH 750	750 MCM	1.03	4.69

3. ALUMINIUM DUAL RATED STANDARD RANGE CABLE LUGS AND COMPRESSION CONNECTORS

3.1. Standard Barrel Cable Lugs - One Hole

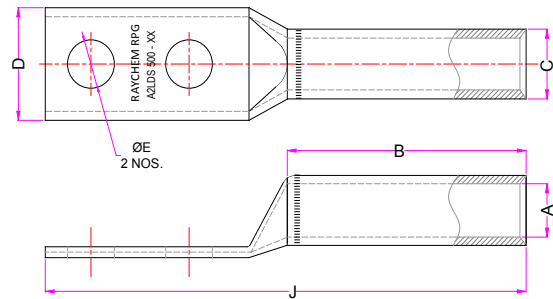


- * Raychem RPG Aluminum one hole lugs are made of high conductivity aluminium.
- * Provides maximum conductivity, low resistance and ductility for an excellent combination of electrical and crimp forming properties.
- * Covers a wide range of Aluminum or Copper conductors.
- * Lugs are tin plated to resist electrolytic corrosion.
- * Compatible with leading crimping tools.
- * Chamfered ends ensure simplicity and ease of conductor insertion.
- * Color-coded end caps inserted in barrel end prevents foreign materials from entering and contaminating the connector before crimping.
- * Designed for heavy duty applications upto 35kV applications
- * (AL9CU) 90 °C
- * Prefilled with oxide inhibiting compound

Raychem RPG Product Code	Cable Size	Stud Size	Dimensions (Inch)					
			A (Internal Dia)	C (Outer Dia)	B (Barrel Length)	C (Palm Width)	D (Palm Length)	J (Total Length)
ALDS 6 -5/16"	6 AWG	5/16	0.2	0.35	0.75	0.56	0.88	2.28
ALDS 4 -5/16"	4 AWG	5/16	0.26	0.47	0.94	0.62	0.96	2.3
ALDS 2 -3/8"	2 AWG	3/8	0.31	0.53	0.92	0.75	1.03	2.62
ALDS 2 -1/2"	2 AWG	1/2	0.31	0.53	0.92	0.75	1.12	2.62
ALDS 1 -3/8"	1 AWG	3/8	0.35	0.53	0.92	0.75	1.03	2.62
ALDS 1 -1/2"	1 AWG	1/2	0.35	0.53	0.92	0.75	1.12	2.62
ALDS 1/0 -3/8"	1/0 AWG	3/8	0.39	0.63	1.18	0.88	1.31	3.12
ALDS 1/0 -1/2"	1/0 AWG	1/2	0.39	0.63	1.18	0.88	1.31	3.12
ALDS 2/0 -1/2"	2/0 AWG	1/2	0.44	0.69	1.3	0.95	1.25	3.19
ALDS 3/0 -1/2"	3/0 AWG	1/2	0.48	0.76	1.5	1.06	1.28	3.44
ALDS 4/0 -1/2"	4/0 AWG	1/2	0.54	0.87	1.44	1.19	1.34	3.56
ALDS 4/0 -5/8"	4/0 AWG	5/8	0.54	0.87	1.44	1.19	1.34	3.56
ALDS 250 -1/2"	250 MCM	1/2	0.59	0.91	1.56	1.24	1.31	3.62
ALDS 250 -5/8"	300 MCM	5/8	0.65	1.01	2.19	1.36	1.31	4
ALDS 350 -1/2"	350 MCM	1/2	0.72	1.11	2.19	1.49	1.31	4.25
ALDS 350 -5/8"	350 MCM	5/8	0.72	1.11	2.19	1.49	1.31	4.32
ALDS 500 -5/8"	500 MCM	5/8	0.84	1.32	2.94	1.73	1.5	5.44
ALDS 750 -5/8"	750 MCM	5/8	1.03	1.5	3.32	1.72	1.87	6.38
ALDS 1000 -5/8"	1000 MCM	5/8	1.19	1.84	4.62	2.42	1.87	7.94

3. ALUMINIUM DUAL RATED STANDARD RANGE CABLE LUGS AND COMPRESSION CONNECTORS

3.2. Standard Barrel Cable Lugs - Two Holes



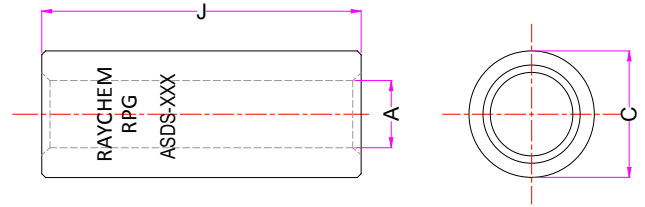
- * Raychem RPG Aluminum Compression two hole lugs are made of high conductivity Aluminium.
- * Provides maximum conductivity, low resistance and ductility for an excellent combination of electrical and crimp forming properties.
- * Covers a wide range of aluminum or copper conductors
- * Lugs are tin plated to resist electrolytic corrosion.
- * Compatible with leading crimping tools.

- * Chamfered ends ensure simplicity and ease of conductor insertion.
- * Color-coded end caps inserted in barrel end prevents foreign materials from entering and contaminating the connector before crimping.
- * Designed for heavy duty applications upto 35kV applications (AL9CU) 90 °C.
- * Prefilled with oxide inhibiting compound.

Raychem RPG Product Code	Cable Size	Stud Size	Hole Spacing	Dimensions (Inch)			
				A (ID)	B (Barrel Length)	D (Palm Width)	J (Total Length)
A2LDS 1/0 -3/8"	1/0 AWG	3/8	1.75	0.39	1.5	0.88	5.28
A2LDS 2/0-1/2"	2/0 AWG	1/2	1.75	0.44	1.5	0.94	5.5
A2LDS 3/0-1/2"	3/0 AWG	1/2	1.75	0.48	1.5	1.06	5.5
A2LDS 4/0-1/2"	4/0 AWG	1/2	1.75	0.54	1.94	1.19	6
A2LDS 250-1/2"	250 MCM	1/2	1.75	0.59	1.94	1.25	6
A2LDS 300-1/2"	300 MCM	1/2	1.75	0.65	2.25	1.38	6.56
A2LDS 350-1/2"	350 MCM	1/2	1.75	0.72	2.25	1.5	6.56
A2LDS 400-1/2"	400 MCM	1/2	1.75	0.76	2.5	1.62	6.88
A2LDS 500-1/2"	500 MCM	1/2	1.75	0.84	3	1.75	7.31
A2LDS 750-1/2"	750 MCM	1/2	1.75	1.03	3.38	1.75	8.25
A2LDS 1000-1/2"	1000 MCM	1/2	1.75	1.19	4.62	2.44	9.68

3. ALUMINIUM DUAL RATED STANDARD RANGE CABLE LUGS AND COMPRESSION CONNECTORS

3.3. Aluminium Standard Compression Connectors



- * Raychem RPG Aluminum Compression Connectors are made of high conductivity Aluminium.
- * Provides maximum conductivity, low resistance and ductility for an excellent combination of electrical and crimp forming properties.
- * Covers a wide range of aluminum or copper conductors.
- * Lugs are tin plated to resist electrolytic corrosion.
- * Compactible with leading crimping tools.
- * Chamfered ends ensure simplicity and ease of conductor insertion.
- * Color-coded end caps inserted in barrel end prevents foreign materials from entering and contaminating the connector before crimping.
- * Designed for heavy duty applications upto 35kV applications
- * (AL9CU) 90 °C
- * Prefilled with oxide inhibiting compound.

Raychem RPG Product Code	Cable Size	Dimensions (Inch)	
		A (ID)	J (Total Length)
ASDS 6	6 AWG	0.2	1.62
ASDS 4	4 AWG	0.26	2.12
ASDS 2	2 AWG	0.31	0.2
ASDS 1	1 AWG	0.35	0.2
ASDS 1/0	1/0 AWG	0.39	2.12
ASDS 2/0	2/0 AWG	0.44	2.31
ASDS 3/0	3/0 AWG	0.48	2.62
ASDS 4/0	4/0 AWG	0.54	2.75
ASDS 250	250 MCM	0.59	2.94
ASDS 300	300 MCM	0.65	3.12
ASDS 350	350 MCM	0.72	3.38
ASDS 500	500 MCM	0.84	3.88
ASDS 750	750 MCM	1.03	4.68
ASDS 1000	1000 MCM	1.19	5.25

Raychem RPG

ENGINEERING GROWTH • PIONEERING EXCELLENCE



Raychem RPG (P) Ltd.

Corporate Office

RPG House, 463, Dr. A. B. Road, Worli,
Mumbai - 400030
Tel. : +91 22 24937485 / 24937486
Fax : +91 22 24938879

Vasai Factory

1,62, M.G. Rd., Near Bharat Petroleum Pump,
Off. Western Express Highway,
P. Satavali, Bassein,
Taluka Vasai, Dist. Palghar
Tel. : +91 250 3057500
Fax : +91 250 2480046

Email : raychem@raychemrpg.com

www.raychemrpg.com



(A TE-Connectivity - RPG Enterprises JV)

Copyright 2016

All Rights Reserved to Raychem RPG (P) Limited
V. 012016