

IQL[®] Centaur 85 Multi Purpose General Light

Industrial Sector
Offshore Oil & Gas
Water and Power Utilities
General Lighting



IQL® Centaur Multi Purpose General Light

Overview

With its robust design and a power consumption of just 85 watts, yet with an impressive light output of 6,200 lumens, the IQL Centaur is an absolutely ideal all-round luminaire for industrial applications – both indoors and outdoors. The IQL Centaur is hermetically sealed, so as to ensure that environmental conditions do not affect the functionality of the luminaire.

The main housing, mounting plate and fastenings are made of high quality stainless steel AISI 316L. The IP66 rated junction box is protected by a sealing and packing which is made from highly weather and seawater resistant material, thus ensuring the unit is impermeable to moisture – making the IQL Centaur ideal for general lighting in any environment – be it chemical plants, power stations, sewers and water treatment facilities as well as offshore oil, gas and wind farm facilities.

The lens is made out of borosilicate glass – which is especially shock resistant and break proof – available in either clear or frosted finish. The IQL Centaur when fitted with the frosted lens is especially ideal for use in the work Area, where a high level of illumination without glare is required. In terms of light colour, it is possible to choose between; Standard White (colour 830), Warm White (colour 827), Cool White (colour 840) and ClearSky (colour 290).

The IQL Centaur 85 EM-version with LED emergency light has a replaceable external battery pack, which supplies a 3-hour emergency power source. The battery pack is connected to the fixture with a 250 mm long Ex-link cable. The emergency lighting unit which comprises of 6 power LEDs is subjected every 50 days to an automatic test to check system functionality. In order to further reduce impact on the environment, the battery pack has no nickel-cadmium.

Characteristics

- Life expectancy approx. 100,000 hours (not for battery)
- Sealed unit
- Shock and vibration resistant
- Replaceable external battery – EM-version
- Patented construction

Technical Details

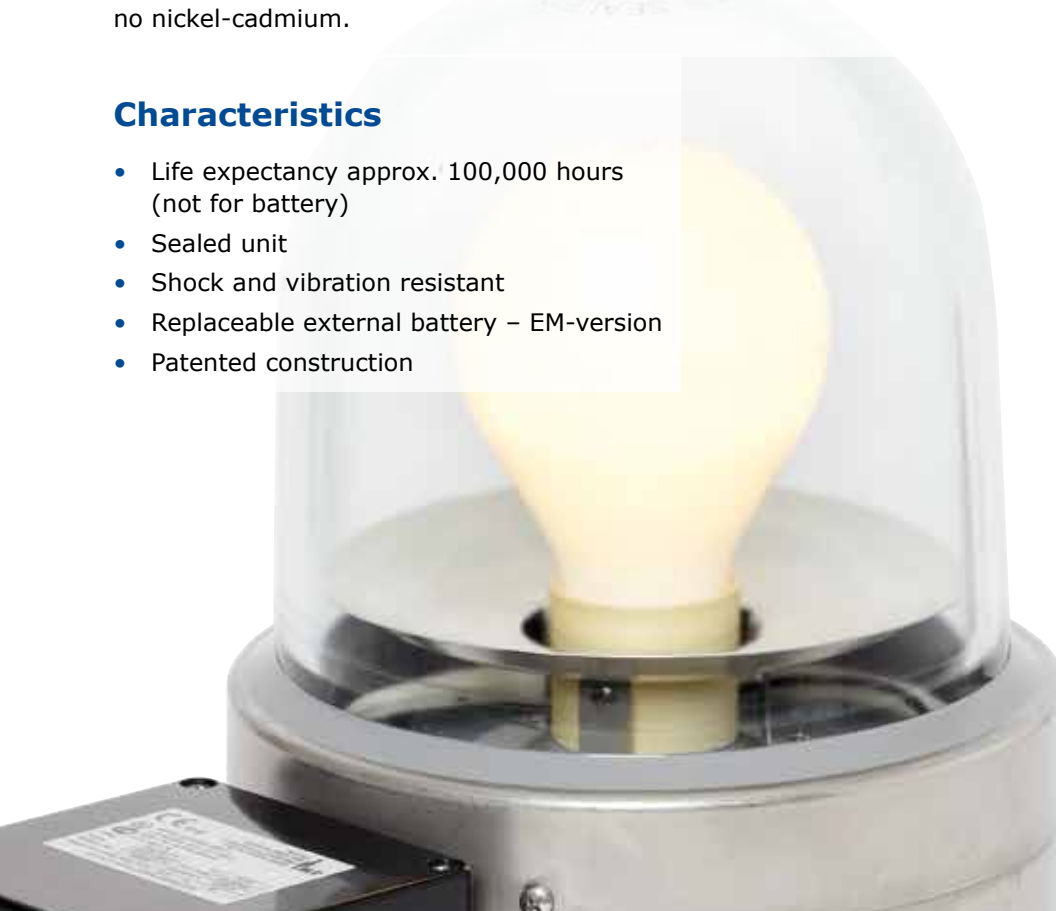
Model
Light source
Luminous flux (light source)
Luminous flux (light source) lm/W
Lamp lumen depreciation
System power
Light colour
Colour rendering
Ambient temperature
Burning position
(Re)ignition
Voltage range
Power factor/Cos φ
IP Rating
IEC protection classes
Lens
Mercury level
Housing
Weight of the light source
Package weight per piece
Package dimensions
Standard version
Emergency Light
Battery

Certificate Details

Model
ATEX classification
Area classification
Certificate (ATEX)
Certificate (GOST)
Marking
CE

Optional

Light colour
Entries
Voltage range
Lens
External reflector
High temperature
Mounting brackets
IP68
Cable
Glare Deflector



IQL® Centaur 85

QL (Induction)
6,200 lm
73 lm/W
30 % loss after 60,000 hours
85 W
Standard White (colour 830)
Ra>80
-40 °C up to +40 °C
Universal
Immediate
200 – 277 Vac ± 6 %
>0.98
IP66
Class 1
Clear borosilicate glass
5.0 mg
Stainless steel AISI 316L
12 kg
13 kg
250x400x350 mm LxWxH
Ex e junction box 3x M25 entries (GRP)
Terminals suitable for max. 4 mm ²
Suitable for through wiring
--
--

IQL® Centaur 85 EM

QL (Induction)
6,200 lm
73 lm/W
30 % loss after 60,000 hours
85 W
Standard White (colour 830)
Ra>80
-20 °C up to +40 °C
Universal
Immediate
200 – 277 Vac ± 6 %
>0.98
IP66
Class 1
Clear borosilicate glass
5.0 mg
Stainless steel AISI 316L
18 kg
19 kg
550x250x350 mm LxWxH
Ex e junction box 3x M25 entries (GRP)
Terminals suitable for max. 4 mm ²
6 power LED (18 W) White
Environmentally friendly (no nickel-cadmium); +3 Hours battery back-up
– Batteries charged within 24 hours; LED Status Indication; Automatic function test with indication lights – approx. every 50 days; Fixture with 250 mm cable with Ex plug; battery pack with Stainless Steel AISI 316L mounting plate; with female Ex connector

IQL® Centaur 85

Group II, Category 2, Gas and Dust
Category 2 (Zone 1 and 21)
KEMA 02ATEX1257X
POCC NL.HO06.B00732
Ex II 2 GD EEx me II T4 T135 °C
Yes

IQL® Centaur 85 EM

Group II, Category 2, Gas and Dust
Category 2 (Zone 1 and 21)
KEMA 06ATEX0261
POCC NL.HO06.B00732
Ex II 2 GD Ex d e mb IIC T4 T135 °C IP66
Yes

Warm White (colour 827), Cool White (colour 840), ClearSky® (colour 290)

3x M20 entries
100 – 120 Vac/dc ± 6 %
Frosted borosilicate glass
Narrow or wide beam
Up to +55 °C Ambient
On request
On request
On request
275, 375 and 475 mm shield – 3 positions, stainless steel AISI 316L

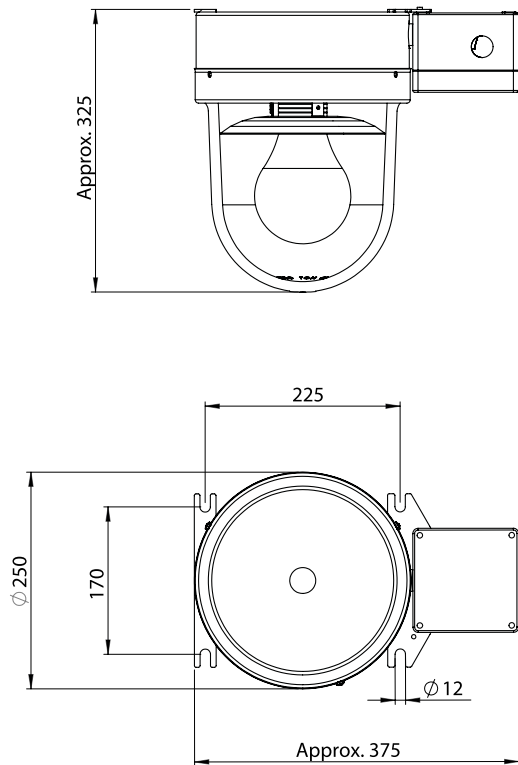
Warm White (colour 827), Cool White (colour 840), ClearSky® (colour 290)

3x M20 entries
--
Frosted borosilicate glass
Narrow or wide beam
--
On request
--
On request
--

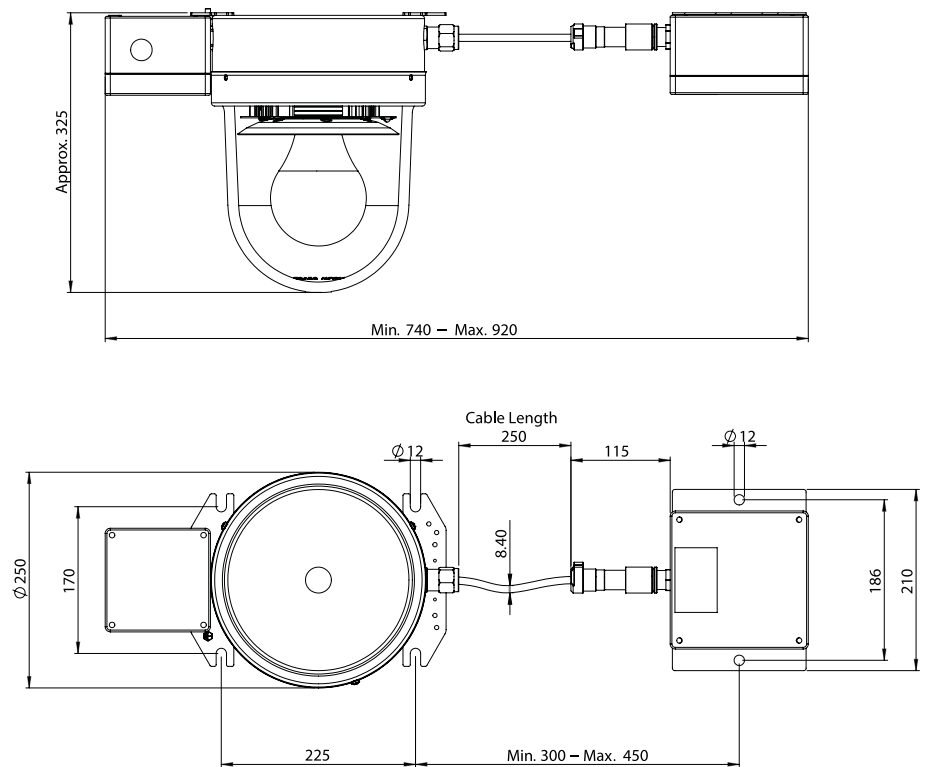
The IQL® 85 Centaur Multi Purpose Light with excellent light output of up to 6,200 lumens is consuming only 85 watts power, and has a life expectancy up to 100,000 hours.

Integrated Reflector**Sealed unit****Replaceable external battery****Frosted Glass Version**

IQL Centaur 85



IQL Centaur 85 EM



Article Code	Version	Wattage	Voltage	Connection	Weight
EQNI4BC0C241	Ex (Clear)	85 W	230V	Ex e junction box with 3x M25 entries	12 kg
EQNI4BC0E241	Ex (Clear)	85 W	230V	Ex e junction box with 3x M20 entries	12 kg
EQNI4BC0C441	Safe Area (Clear)	85 W	230V	Standard junction box with 3x M25 entries	12 kg
EQNI4BC0E441	Safe Area (Clear)	85 W	230V	Standard junction box with 3x M20 entries	12 kg
EQNI4BE0C241	Ex (Frosted)	85 W	230V	Ex e junction box with 3x M25 entries	12 kg
EQNI4BE0E241	Ex (Frosted)	85 W	230V	Ex e junction box with 3x M20 entries	12 kg
EQNI4BE0C441	Safe Area (Frosted)	85 W	230V	Standard junction box with 3x M25 entries	12 kg
EQNI4BE0E441	Safe Area (Frosted)	85 W	230V	Standard junction box with 3x M20 entries	12 kg
EQRI4BC0C242	Ex (Clear)	85 W	230V	Ex e junction box - 3x M25 entries with Emergency battery backup	18 kg
EQRI4BC0E242	Ex (Clear)	85 W	230V	Ex e junction box - 3x M20 entries with Emergency battery backup	18 kg
EQRI4BE0C242	Ex (Frosted)	85 W	230V	Ex e junction box - 3x M25 entries with Emergency battery backup	18 kg
EQRI4BE0E242	Ex (Frosted)	85 W	230V	Ex e junction box - 3x M20 entries with Emergency battery backup	18 kg



IMT B.V.
 Pascalweg 10a, 4104 BG Culemborg
 P.O. 88, 4100 AB Culemborg
 The Netherlands
 Tel: +31 88 12 69 100
<http://www.imt.eu>

IMT Lighting (UK) Ltd
 Saltergate Lane
 Bamford, Hope Valley
 S33 0BE
 Tel: +44 1433 695 518
<http://www.imt-lighting.com>

IMT Far East Pte Ltd
 22 Boon Lay Way
 #01-58 Level 2 Tradehub 21
 Singapore 609968
 Tel: +65 6341 5153
<http://www.imt.sg>

IMT Deutschland GmbH
 Hovesaatstraße 6
 48432 Rheine
 Germany
 Tel: +49 5971 802 9700
<http://www.imt-deutschland.de>